

# PITTS AVIATION ENTERPRISES, Inc.

P.O. BOX 548 • HOMESTEAD, FLORIDA 33030

May 1, 1975 Revision B

Page 1 of 2

Service Letter No. 5

PITTS MODEL S-2A AIRPLANE

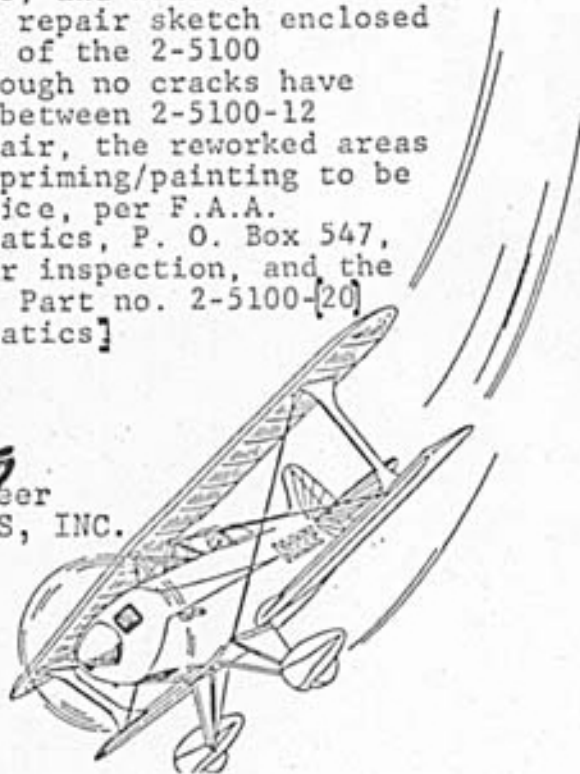
APPLICABILITY: Applies to Model S-2A aircraft serial numbers 2001 thru 2105

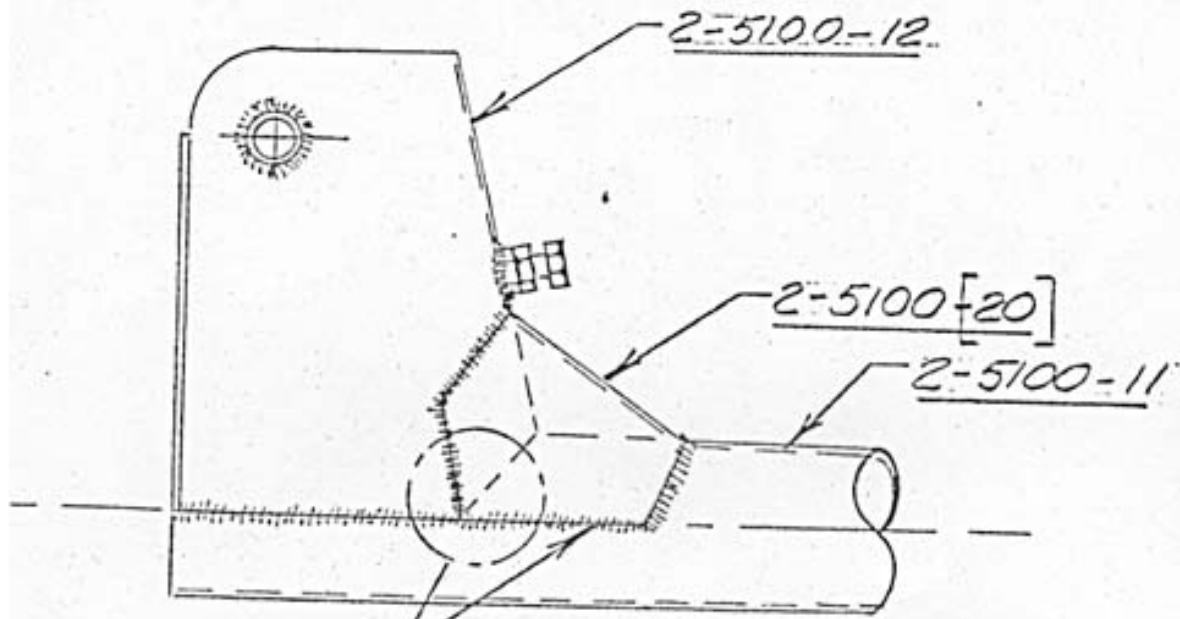
PURPOSE: To check for cracks in the P/N 2-5100 control tube assembly.

DISCUSSION: We have had a few reports involving airplane subject to frequent and vigorous aerobatics concerning cracks initiating at the junction of the aft. 2-5100-12 stick housing, where it is welded to the 2-5100-11 tube. (The 2-5100 control tube assembly connects the front and rear control sticks.) It is reported that having started, the cracks progress slowly.

ACCOMPLISH THE FOLLOWING: This area is easily inspectable without removal or disassembly of parts. Strip paint from the suspect region and inspect for cracks using a ten-power magnifier. If no cracks are noted, repaint the stripped area and repeat this inspection each 100 flight hours. If cracks are noted, remove the 2-5100 control tube assembly from the airplane, weld shut the cracks, and weld on reinforcing gusset, P/N 2-5100-[20], per repair sketch enclosed with this letter. Note that both ends of the 2-5100 control tube should be inspected, although no cracks have been reported at the forward junction between 2-5100-12 housing and 2-5100-11 tube. After repair, the reworked areas should be repainted. All welding and priming/painting to be in accordance with good aircraft practice, per F.A.A. AC 43.13.1. Please advise [Pitts Aerobatics, P. O. Box 547, Afton, WY.83110], of the results of your inspection, and the total airframe time on your airplane. Part no. 2-5100-[20] gussets are available from [Pitts Aerobatics]

*E. F. Dearing*  
E.F. Dearing, Chief Engineer  
PITTS AVIATION ENTERPRISES, INC.

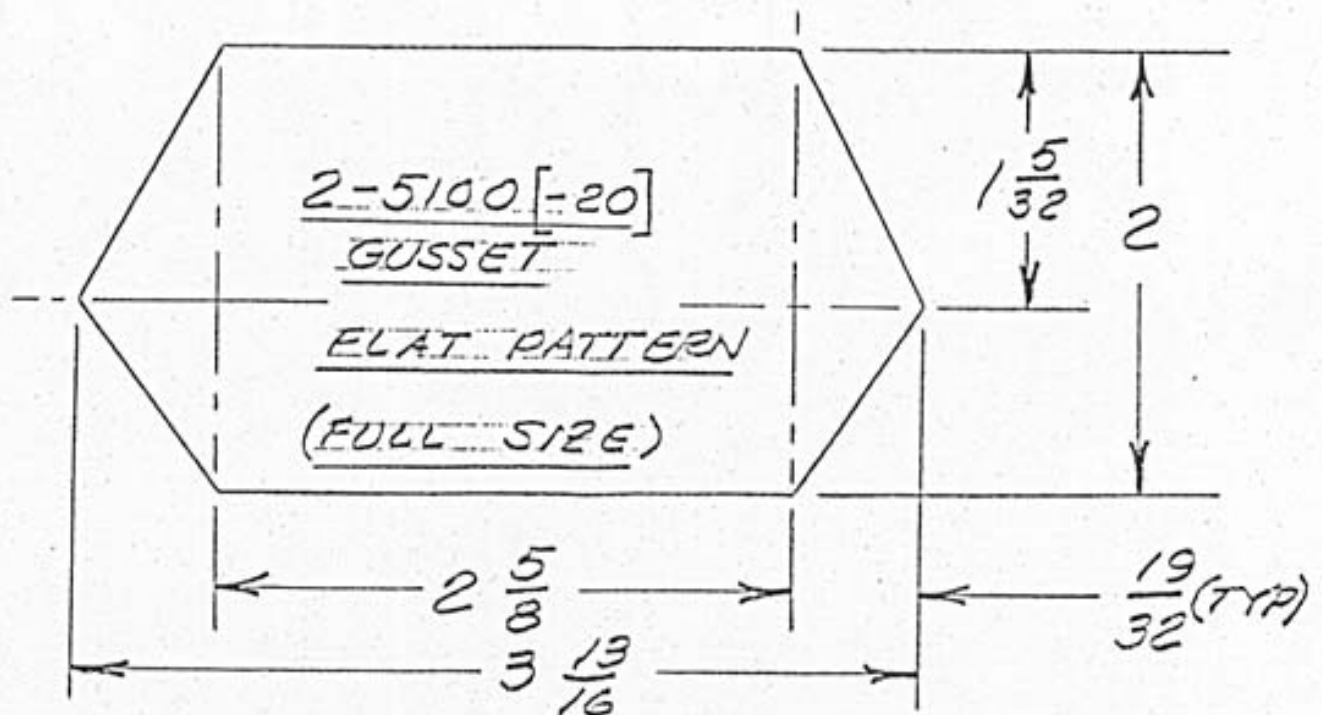




INSPECT FOR CRACKS.

INSTALL WITH LONG EDGE  
HORIZONTAL AS SHOWN.

DITTS 5-2A SERVICE LETTER #5  
(P. 2 of 2) REVISION B



(MAKE FROM .036 4130 N SHEET PER  
MIL-S-18729)