

No: 000332

CHRISTEN INDUSTRIES, INC.  
1048 SANTA ANA VALLEY ROAD  
HOLLISTER, CALIFORNIA 95023  
TELEPHONE: (408) 637-7405

By: FLC Date: 10-21-83 Page: 1 of 1

Send To: PRODUCTS 901 THRU 925

C \* MULTIPLE LETTER MAILING \* Subject: COCKPIT HEATER SYSTEM  
U AVAILABLE FOR EAGLE II  
S SEE FIRST LETTER FOR AIRCRAFT  
T NAME AND ADDRESS.

In response to requests from Eagle II aircraft builders, a cockpit heater system has been developed. The system is now available as an optional Eagle II kit which can be installed during aircraft construction or which can be retrofitted to completed aircraft. The enclosed Christen Engineering Sketch X-90176 depicts the system components and their arrangement.

This new system provides ample heat to warm both cockpits with easy adjustment of the amount of heat directed to either cockpit. It allows comfortable wintertime operation of the Eagle II aircraft in cold climates.

The system is composed of an exhaust-mounted heat exchanger, a firewall-mounted hot air distribution box with proportioning valve, inlet and outlet air ducts, cockpit air valves, and a locking type push-pull cable for temperature control. All metal parts are stainless steel, chromate-coated alloy aluminum, or brass. Valve seals and ducts are high-temperature molded silicone rubber. Assembly and mounting hardware components are aircraft quality with corrosion resistant finish.

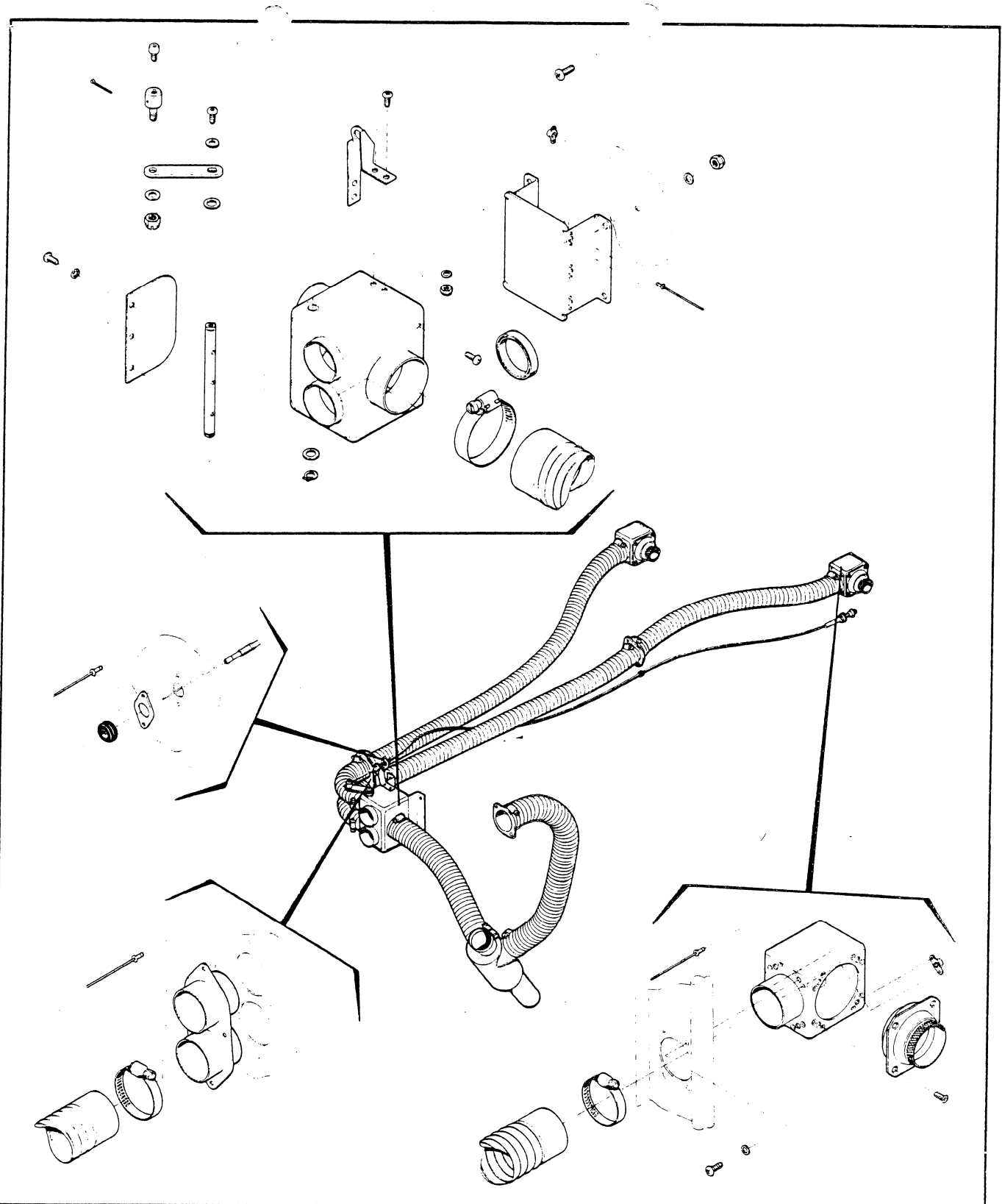
The complete heater system can be installed with hand tools in 10 to 14 man-hours including painting of visible parts where desired and including disassembly and re-assembly of the aircraft as necessary. Installed weight of the system is 5-1/2 pounds.



Orders for the heater system are now being accepted for delivery beginning in January 1984 at a production rate of 25 per month. As with other Eagle II kits, payment is required with order via check, money order, or VISA or MasterCard credit card. Shipment will be made via UPS freight collect. Following is part number and price information:

918-HT HEATER KIT, complete

918-HT CRATING CHARGE

ENCLOSURE: Engineering Sketch X-90176



<b>UNLESS OTHERWISE SPECIFIED:</b>  TOLERANCES: FRAC. $\pm 1/64$ DEC. XXX $\pm .005$ ANGLES $\pm 0^\circ 30'$  DIMENSIONS IN INCHES DO NOT SCALE DRAWING	MATERIAL AND CONDITION NONE		<b>CHRISTEN</b>  CHRISTEN INDUSTRIES HOLLISTER, CALIFORNIA	
	FINISH NONE			
DRAWN BY I. CLEDE	DATE 10-19-83	PROJECT EAGLE II AIRCRAFT	TITLE 918-HT HEATER KIT	
	APPROVED BY 		DATE 10-18-83	CODE PA